

The Innovator of New Ultrasound

wisonic

Piloter

The Next Generation Tablet Ultrasound

wisonic



Shenzhen Wisonic Medical Technology Co., Ltd.

Contact address: 6th Floor, NO.6 Building, Pingshan Technology Park,
Taoyuan Street, Nanshan District, 518055 Shenzhen, P.R.China

Tel : +86 755-8600 7788

Fax: +86 755-8600 7799

Email: info@wisonic.com

Website: www.wisonic.com

© Shenzhen Wisonic Medical Technology Co., Ltd. All rights reserved. **wisonic** is a registered trademark of Shenzhen Wisonic Medical Technology Co., Ltd. The internal information is for learning only. Shenzhen Wisonic Medical Co., Ltd. reserves the right to modify product specifications and / or terminate the production of any product at any time. Product specifications are subject to change without notice.

H-7400-00-40250 领航者彩页 (8P) (英文) -V3.0

This brochure is only for academic exchanges and references. Nothing in this material should be used to diagnose or treat any disease or condition. Please refer to Wisonic user manual for any operation guidelines.

wiCloud mentioned in the material may be subject to government regulation and may not be available in all countries. Please contact wisonic local sales representative for more information.

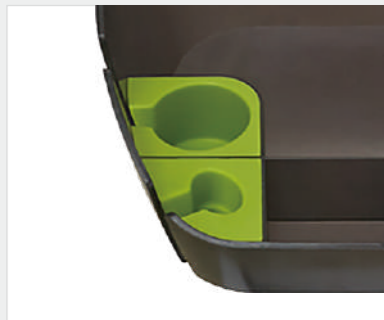
Smart Design

With the breakthrough appearance, Piloter provides not only a lightweight and flexible design but also the customized workflow, ensuring a more efficient operation.



Weighing only 2kg
Extremely lightweight and portable

30cm height adjustment range



Dedicated Probe Holder for Disinfection

Smart, easy to maneuver base



13.3-inch touch screen which allows for landscape or portrait display



1 to 3 probe adapter

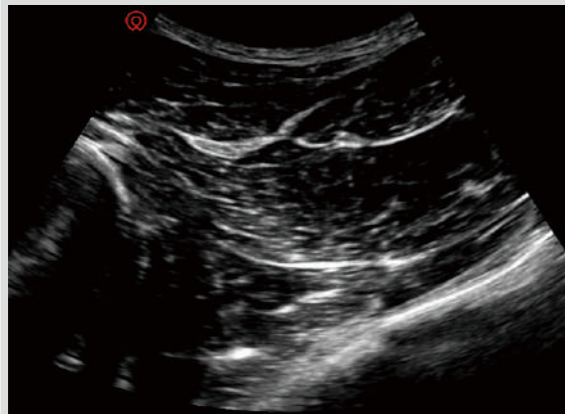


3 in 1 handle



Dedicated Application

Piloter provides an efficient and systematic experience for a range of applications including musculoskeletal, pain management, anesthesia, vascular and physical therapy. Piloter has been designed with the clinician in mind to satisfy core demands by providing the best in class imaging on an easy-to-use, intuitive platform. This allows the clinician to ensure they are providing precision, high quality care at all times.

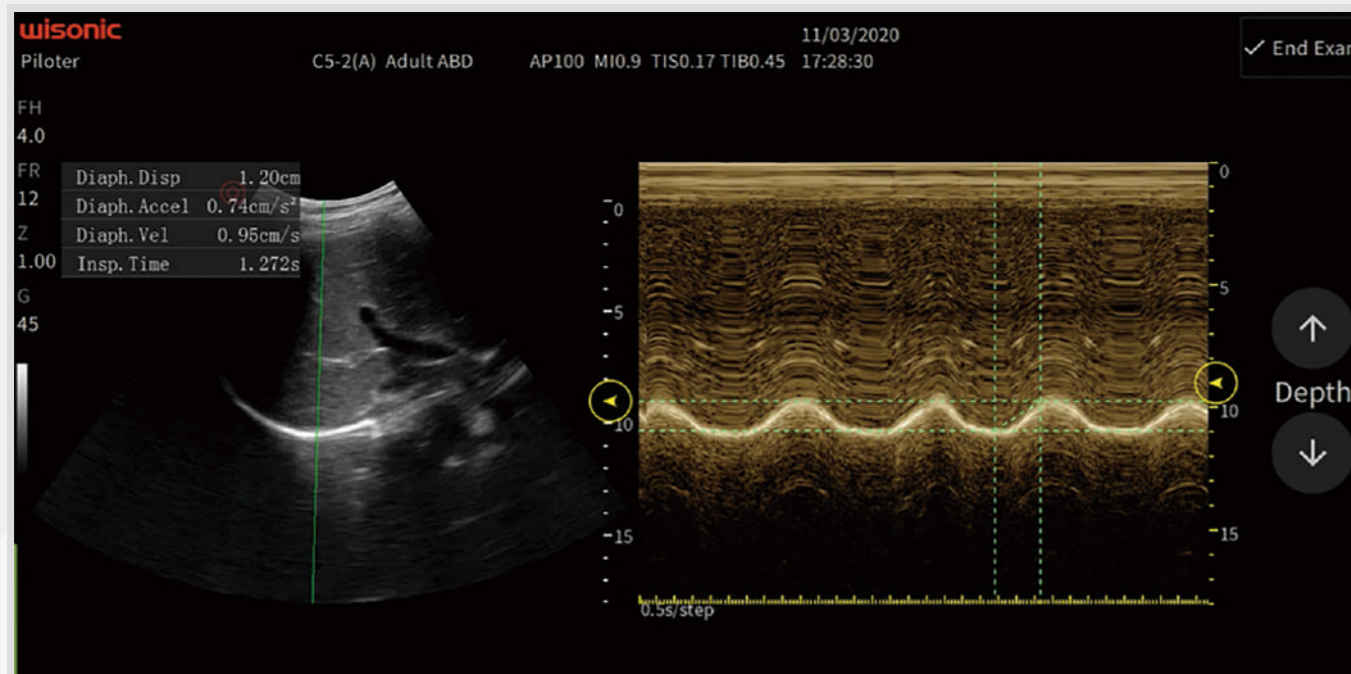
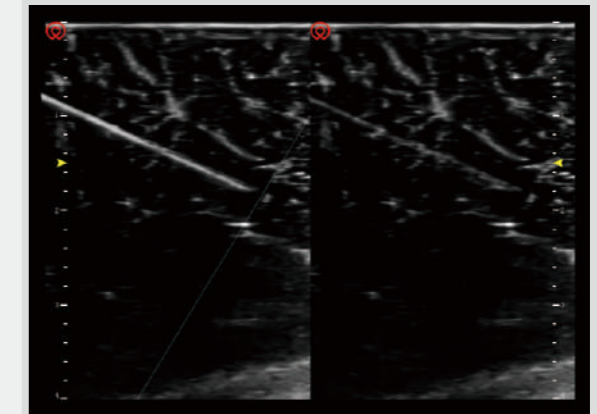


HoloBeam Platform

Piloter was built on a HoloBeam Platform. Along with fine image tuning according to users' requests, Piloter is able to provide the whole field best detail image quality and outstanding resolution. Users do not need to adjust the focus, and the focus is everywhere in the image.

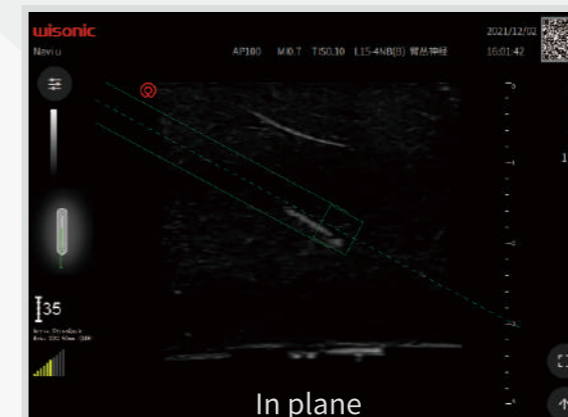
wiNeedle

During the puncture, the most challenging work is distinguishing the needle from tissue. To solve this problem, Piloter provides an intelligent needle enhancement function - wiNeedle. wiNeedle can automatically recognize the needle, always making the ultrasound perpendicular to the needle shaft to enhance the needle display.



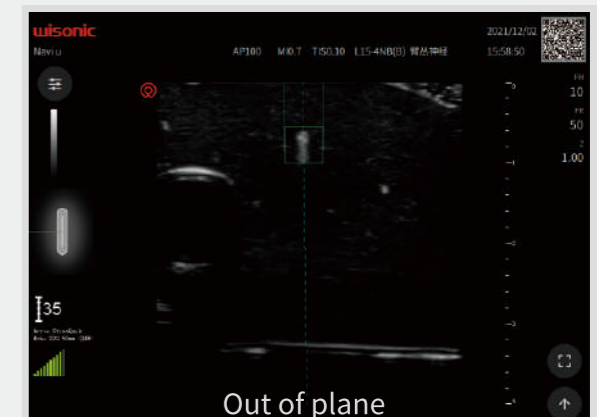
Auto Diaph

Auto Diaphragm measurement can evaluate diaphragm status and reckon the function of spontaneous respiration for the using ventilator for a long time.



wiGuide

The magnetic needle navigation displays the position of needle by detecting the magnetic field of the magnetized needle, helping doctor reach the target precisely either in the in plane or out of plane procedure.



Versatile Applications - provides best-in-class image quality

A wide selection of transducers covers all imaging applications, and provides stand-out imaging from large patients to paediatrics. An innovative mid-line design along with wiNeedle provides accuracy for confidence in every procedure.



Probe Buttons

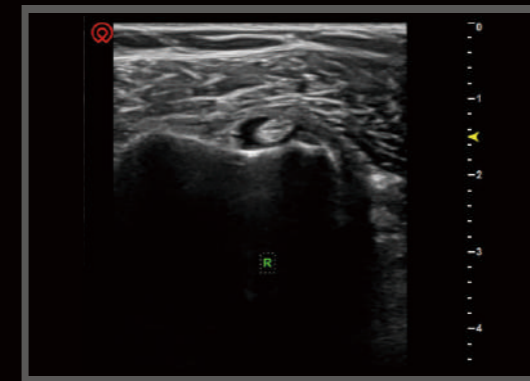
With customization supporting buttons, the remote control probe allows doctors to perform optimization without direct interaction to the system when you are at a distance from the ultrasound.



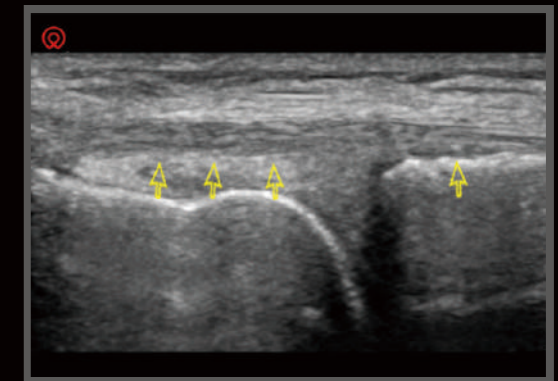
Hockey Stick Probe

With a high frequency and lightweight design, the hockey stick probe is the perfect tool for detailed imaging where space is limited. Perfect for superficial structures and small joints.

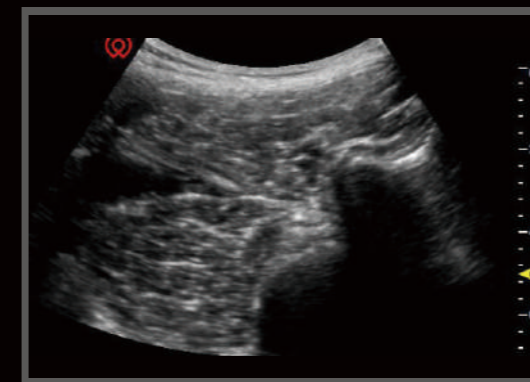
Outstanding Image Quality



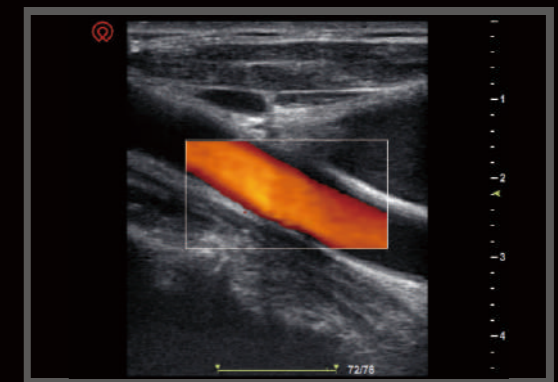
Biceps Tendon



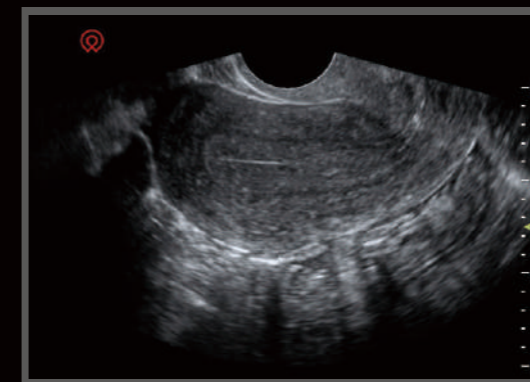
Knee Joint



Spine



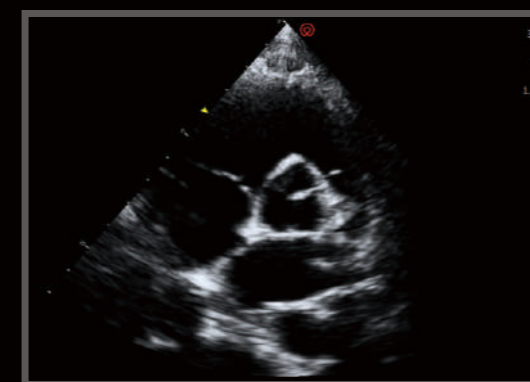
Lower Extremity Artery



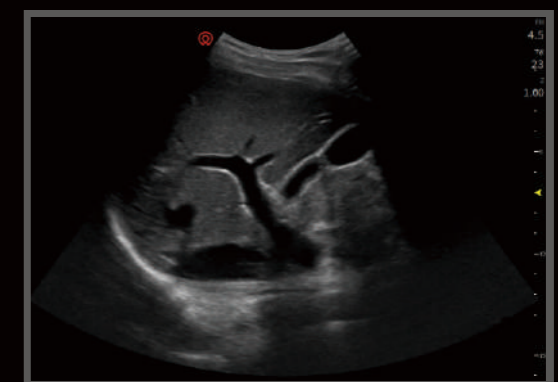
Uterus



Fetus



Aortic Valve



Liver